

Alsatian architecture



This house is typical of Alsatian architecture. It is a « short timber » house with a saddled roof. The style can be dated to the second half of the XVIth or XVIIth century.

Small architectural lexicon [English/Alsatian](#)



Gutter wall
Kandelwür



Frame
Fanschter-Ingfassung



Cross beam
Riegel



Corbel
Mürvorsprung



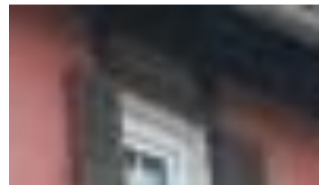
Corner post
Eckstander



Discharge Beam
Strawe



Coyau ≈ Eaves
Leischte



Lintel
Sturz



Surplus Attic
Kniestock



Hip roof
Halbwalm

The numbering of the wooden elements would make it possible to reconstruct the buildings after disassembly.

On the right, numbers on beams of the barn located at the back of the old police station.



Bibliography : Base numérique du patrimoine d'Alsace

En savoir plus :
Deutsch :
English :



www.soppe-le-bas.fr

